

Life-wide Learning Award

£250 is awarded each year to an undergraduate and a postgraduate student who have demonstrated outstanding commitment to making their own educational experience more complete by the learning and personal development they have gained from experiences that are in addition to their academic or research programme.

Requirements

An integrative account of your life-wide learning

Tell us about the **things you have done** in addition to your academic programme while you have been at university, **why you did these things** and **how you have developed as a person** through doing these things (no more than 1000 words)

Tell us what a **more complete education** means to you (no more than 100 words)

What we hope to discover:

- Your appreciation of the rich and diverse experiences you have had
- Stories of what has inspired you
- Insights you have gained
- Understanding of how you are becoming the person you aspire to be

Suggested examples of additional experiences that might be included:

(this is not an exclusive list)



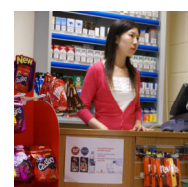
Being Creative



Being Enterprising



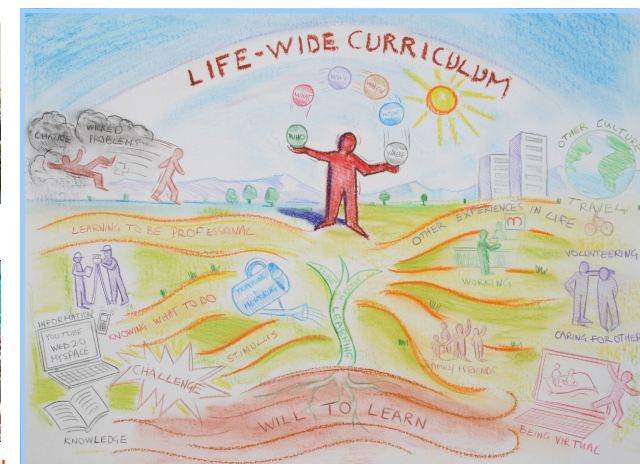
Volunteering



Part-Time Work



Travel & Cultural Experiences



Sports



Being a carer



Organising shows, gigs, performances or events



